

Effects of aging and caloric restriction on fiber type composition, mitochondrial morphology and dynamics in rat oxidative and glycolytic muscles

Julie Faitg¹, Jean-Philippe Leduc-Gaudet², Olivier Reynaud¹, Guylaine Ferland³, Pierrette Gaudreau³, Gilles Gouspillou^{4, 1*}

¹Université du Québec à Montréal, Canada, ²McGill University, Canada, ³Université de Montréal, Canada, ⁴Département des sciences de l'activité physique, Université du Québec à Montréal, Canada

Submitted to Journal:
Frontiers in Physiology

Specialty Section:
Striated Muscle Physiology

Article type:
Original Research Article

Manuscript ID:
448771

Received on:
16 Jan 2019

Revised on:
13 Mar 2019

Frontiers website link:
www.frontiersin.org

Conflict of interest statement

The authors declare that the research was conducted in the absence of any commercial or financial relationships that could be construed as a potential conflict of interest

Author contribution statement

JF and GG contributed to the conception and design of the study; JF, JPLG, OR and GG collected the data; All authors contributed to data analysis and interpretation; JF and GG wrote the first draft of the manuscript; All authors contributed to manuscript revision, read and approved the submitted version.

Keywords

Aging, Nutrition - Topics, Sarcopenia, Atrophy, skeletal muscle, Mitochondria, Electron microscopy, mitochondrial dynamics, calorie restriction (CR)

Abstract

Word count: 296

Aging is associated with a progressive decline in muscle mass and strength, a process known as sarcopenia. Evidence indicates that mitochondrial dysfunction plays a causal role in sarcopenia and suggests that alterations in mitochondrial dynamics/morphology may represent an underlying mechanism. Caloric restriction (CR) is amongst the most efficient non-pharmacological interventions to attenuate sarcopenia in rodents and is thought to exert its beneficial effects by improving mitochondrial function. However, CR effects on mitochondrial morphology and dynamics, especially in aging muscle, remain unknown. To address this issue, we investigated mitochondrial morphology and dynamics in the oxidative soleus (SOL) and glycolytic white gastrocnemius (WG) muscles of adult (9-month-old) ad libitum-fed (AL; A-AL), old (22-month-old) AL-fed (O-AL) and old CR (O-CR) rats. We show that CR attenuates the aging-related decline in the muscle-to-body-weight ratio, a sarcopenic index. CR also prevented the effects of aging on muscle fiber type composition in both muscles. With aging, the SOL displayed fragmented SubSarcolemmal (SS) and InterMyoFibrillar (IMF) mitochondria, an effect attenuated by CR. Aged WG displayed enlarged SS and more complex/branched IMF mitochondria. CR had marginal anti-aging effects on WG mitochondrial morphology. In the SOL, DRP1 (pro-fission protein) content was higher in O-AL vs YA-AL and Mfn2 (pro-fusion) content was higher in O-CR vs A-AL. In the gastrocnemius, Mfn2, Drp1 and Fis1 (pro-fission) contents were higher in O-AL vs A-AL. CR reduced this aging-related increase in Mfn2 and Fis1 content. Overall, these results reveal for the first time that aging differentially impacts mitochondrial morphology and dynamics in different muscle fiber types, by increasing fission/fragmentation in oxidative fibers while enhancing mitochondrial size and branching in glycolytic fibers. Our results also indicate that although CR partially attenuates aging-related changes in mitochondrial dynamics in glycolytic fibers, its anti-aging effect on mitochondrial morphology is restricted to oxidative fibers.

Funding statement

This work was funded by a discovery grant from the Natural Sciences and Engineering Council of Canada (NSERC) awarded to Gilles Gouspillou (#RGPIN-2014-04668). Gilles Gouspillou is the recipient of a Chercheur Boursier Junior 1 salary award from Fonds de recherche du Québec-Santé (FRQS-35184). Jean-Philippe Leduc-Gaudet is supported by a Canadian Institutes of Health Research (CIHR) Vanier Fellowship. The authors are grateful to the QNRA, a network financially supported by FRQS, for providing O-AL and O-CR rats.

Ethics statements

(Authors are required to state the ethical considerations of their study in the manuscript, including for cases where the study was exempt from ethical approval procedures)

Does the study presented in the manuscript involve human or animal subjects: Yes

Please provide the complete ethics statement for your manuscript. Note that the statement will be directly added to the manuscript file for peer-review, and should include the following information:

- Full name of the ethics committee that approved the study
- Consent procedure used for human participants or for animal owners
- Any additional considerations of the study in cases where vulnerable populations were involved, for example minors, persons with

disabilities or endangered animal species

As per the Frontiers authors guidelines, you are required to use the following format for statements involving human subjects: This study was carried out in accordance with the recommendations of [name of guidelines], [name of committee]. The protocol was approved by the [name of committee]. All subjects gave written informed consent in accordance with the Declaration of Helsinki.

For statements involving animal subjects, please use:

This study was carried out in accordance with the recommendations of 'name of guidelines, name of committee'. The protocol was approved by the 'name of committee'.

If the study was exempt from one or more of the above requirements, please provide a statement with the reason for the exemption(s).

Ensure that your statement is phrased in a complete way, with clear and concise sentences.

All animal procedures were approved by the Comité Institutionnel de Protection des Animaux de l'UQAM (#CIPA875) and the Centre de recherche de l'hôpital du Sacré-Coeur de Montréal (#FRSQ.01) in compliance with guidelines of the Canadian Council on Animal Care.

Data availability statement

Generated Statement: All datasets generated for this study are included in the manuscript and the supplementary files.

In review

Effects of aging and caloric restriction on fiber type composition, mitochondrial morphology and dynamics in rat oxidative and glycolytic muscles

Julie Faitg^{1,2}, Jean-Philippe Leduc-Gaudet^{2,3,4}, Olivier Reynaud^{2,4}, Guylaine Ferland^{5,6}, Pierrette Gaudreau^{7,8} and Gilles Gousspillou^{2,9}

Affiliations: ¹Département de Biologie, Faculté des Sciences, UQAM, Montréal, Canada ; ²Groupe de recherche en Activité Physique Adaptée, Montréal, Canada; ³Meakins-Christie Laboratories, Department of Medicine and Division of Experimental Medicine, McGill University, Québec ; ⁴Département des sciences de l'activité physique, Faculté des Sciences, UQAM, Montréal, Canada; ⁵Institut de cardiologie de Montréal Research Center, Montreal, QC, Canada H4J 1C5; ⁶Department of Nutrition, University of Montreal, Montreal, QC, Canada H1T 1C8; ⁷Laboratory of Neuroendocrinology of Aging, *Centre Hospitalier de l'Université de Montréal* Research Center (CRCHUM), 900 St-Denis street, R Pavilion, Rm R05.436B-02, Montreal, QC, H2X0A9, Canada; ⁸Department of Medicine, University of Montreal, Montreal, QC, Canada H3C 3J7; ⁹Centre de Recherche de l'Institut Universitaire de Gériatrie de Montréal, Montréal, Canada.

Corresponding author: **Gilles Gousspillou**

Département des Sciences de l'activité physique
Faculté des sciences, UQAM, Pavillon SB, SB-4640
141, Avenue du Président Kennedy, Montréal, Qc, Canada, H2X
1Y4
Email: gousspillou.gilles@uqam.ca

Keywords: Aging, nutrition, sarcopenia, atrophy, skeletal muscle, electron microscopy

Running title: Impact of aging & caloric restriction on muscle mitochondria

ABSTRACT

Aging is associated with a progressive decline in muscle mass and strength, a process known as sarcopenia. Evidence indicates that mitochondrial dysfunction plays a causal role in sarcopenia and suggests that alterations in mitochondrial dynamics/morphology may represent an underlying mechanism. Caloric restriction (CR) is amongst the most efficient non-pharmacological interventions to attenuate sarcopenia in rodents and is thought to exert its beneficial effects by improving mitochondrial function. However, CR effects on mitochondrial morphology and dynamics, especially in aging muscle, remain unknown. To address this issue, we investigated mitochondrial morphology and dynamics in the oxidative soleus (SOL) and glycolytic white gastrocnemius (WG) muscles of adult (9-month-old) *ad libitum*-fed (AL; A-AL), old (22-month-old) AL-fed (O-AL) and old CR (O-CR) rats. We show that CR attenuates the aging-related decline in the muscle-to-body-weight ratio, a sarcopenic index. CR also prevented the effects of aging on muscle fiber type composition in both muscles. With aging, the SOL displayed fragmented SubSarcolemmal (SS) and InterMyoFibrillar (IMF) mitochondria, an effect attenuated by CR. Aged WG displayed enlarged SS and more complex/branched IMF mitochondria. CR had marginal anti-aging effects on WG mitochondrial morphology. In the SOL, DRP1 (pro-fission protein) content was higher in O-AL vs YA-AL and Mfn2 (pro-fusion) content was higher in O-CR vs A-AL. In the gastrocnemius, Mfn2, Drp1 and Fis1 (pro-fission) contents were higher in O-AL vs A-AL. CR reduced this aging-related increase in Mfn2 and Fis1 content. Overall, these results reveal for the first time that aging differentially impacts mitochondrial morphology and dynamics in different muscle fiber types, by increasing fission/fragmentation in oxidative fibers while enhancing mitochondrial size and branching in glycolytic fibers. Our results also indicate that although CR partially attenuates aging-related changes in mitochondrial dynamics in glycolytic fibers, its anti-aging effect on mitochondrial morphology is restricted to oxidative fibers.

INTRODUCTION

Skeletal muscle aging is associated with a progressive decline in muscle mass and function, a biological process known as sarcopenia (Rosenberg, 1997). Several lines of evidence indicate that there is a sustained increase in mitochondrial dysfunction with aging in rodents and humans, which contributes to the progressive decline of muscle mass and function (Dirks and Leeuwenburgh, 2002; Drew and Leeuwenburgh, 2003; Dirks and Leeuwenburgh, 2005; Short et al., 2005; Marzetti et al., 2008; Gousspillou et al., 2010; Gousspillou et al., 2014a). More specifically, aged skeletal muscles display impaired mitochondrial bioenergetics (Drew and Leeuwenburgh, 2003; Short et al., 2005; Gousspillou et al., 2010) and an increase in mitochondrially-mediated apoptosis (Dirks and Leeuwenburgh, 2002; Marzetti et al., 2008; Gousspillou et al., 2014a), which primarily contributes to the aging-related decline in muscle mass and function. The implication of mitochondrial dysfunction in the sarcopenic process is further supported by the fact that overexpression of the mitochondrial-targeted catalase (an antioxidant enzyme) attenuates the loss of muscle mass occurring with aging (Umanskaya et al., 2014).

Long-term caloric restriction (CR) is amongst the most efficient interventions to offset sarcopenia in rodents and CR is thought to exert its effects mostly through by improving mitochondria (see (Gousspillou and Hepple, 2013) for review). Indeed, CR has been shown to decrease mitochondrial reactive oxygen species (ROS) production (Asami et al., 2008; Lanza et al., 2012), increase mitochondrial coupling efficiency (Lanza et al., 2012) and increase mitochondrial respiration per unit of mitochondria in aged muscles (Hepple et al., 2005; Hepple et al., 2006). CR has also been shown to reduce markers of apoptosis in aged rat skeletal muscle (Wohlgemuth et al., 2010). However, many of the effects of CR, specifically on mitochondrial biology, in aging muscles, remain to be studied. Thus, the impact of CR on mitochondrial dynamics and morphology has never been investigated in adult and old muscles. This is of particular importance since it is now established that mitochondrial morphology and function are interrelated, with changes in mitochondrial morphology affecting mitochondrial function (Chen et al., 2005; Jahani-Asl et al., 2007; Yu et al., 2008; Ong et al., 2010; Gomes et al., 2011) and *vice versa* (Benard et al., 2007).

In most cell types, and particularly in skeletal muscle (Ogata and Yamasaki, 1997), mitochondria display a complex and dynamic architecture. Indeed, mitochondria form a dynamic network, with the ability to undergo fusion and fission events, processes collectively known as mitochondrial dynamics (Chan, 2006), which are regulated by Mitofusins 1 & 2 (Mfn 1 & 2) and Optic Atrophy 1 (OPA-1), and Dynamin-Related Protein 1 (DRP1) and mitochondrial-Fission 1 protein (FIS1) proteins, respectively (Chan, 2006). It was for instance shown in skeletal muscle of young animals that Mfn-1 and -2 deletion leads to abnormal mitochondrial morphology, severe

mitochondrial dysfunction and a severe deficit in muscle growth (Chen et al., 2010). Mitochondrial morphology and dynamic therefore play important roles in mitochondrial and skeletal muscle physiology. However, to date, the effects of aging on mitochondrial morphology and dynamics in skeletal muscle remain unclear and those of CR are currently unknown.

In the present study, we investigated the morphology of sub-sarcolemmal (SS) and Intermyofibrillar (IMF) mitochondria in the glycolytic white gastrocnemius and the oxidative soleus muscles of adult and old rats using a 2-dimensional transmission electron microscopy approach (Picard et al., 2013a; Picard et al., 2013b), in order to get a better understanding of the impact of aging and caloric restriction on mitochondrial morphology in skeletal muscles. As we previously observed (Leduc-Gaudet et al., 2015) that the white gastrocnemius of aged mice display larger and less circular SS mitochondria and longer and more branched IMF mitochondria, here we hypothesized that: i) aging in rats would result in an increased mitochondrial size and morphological complexity associated with elevated expression of fusion proteins and/or decreased expression of fission proteins in both glycolytic and oxidative skeletal muscle, and ii) CR would attenuate the effects of aging on mitochondrial morphology and dynamics.

In review

MATERIALS AND METHODS

Animals and tissue collection

All animal procedures were approved by the *Comité Institutionnel de Protection des Animaux de l'UQAM* (#CIPA875) and the *Centre de recherche de l'hôpital du Sacré-Coeur de Montréal* (#FRSQ.01) in compliance with the guidelines of the Canadian Council on Animal Care. All experiments were performed on male Sprague-Dawley rats, obtained either from Charles River (St-Constant, Québec, Canada) or the Quebec Network for Research on Aging (QNRA). Nine-month-old adults *ad libitum-fed* (A-AL, n = 9; Charles River Canada, St-Constant, QC), 22-month-old *ad libitum-fed* (O-AL, n = 4, which represented all available O-AL rats through the QNRA) and 22-month-old rats submitted to CR for 13 months (O-CR, n = 11; QNRA) were studied. CR was initiated at 8 months of age, starting with a 20% restriction for two weeks, followed by a 40% CR for 13 months. Rats from both O-AL and O-CR groups were fed an AIN-93 based diet (Prot 22%, Carb 63%, Fat 15%; Harland, Teklad, Madison, WI). Animals from the O-AL group received standard diet (TD.130770) throughout their lives, whereas rats from the O-CR group were administered this diet until the age of 8 months. At that stage, which corresponds to the start of the CR regimen, O-CR animals received a diet enriched in vitamins and minerals (TD.130771) to ensure that both groups received comparable amounts of micronutrients. A-AL rats were fed a comparable control diet (Charles River Rodent Diet # 5075, St-Constant, QC, Canada; composition: Prot 21%, Carb 66%, Fat 13%).

The animals were euthanized by rapid decapitation. The soleus (SOL) and gastrocnemius (GAS) muscles from left hind paws were collected. Both muscles were cut in half. A piece of the white portion of the GAS (WG) was isolated from the rest of the first half of the GAS. This portion of the WG and the first half of the SOL were sliced into small pieces (>1mm in thickness) and prepared for TEM analysis. The rest of the SOL and the second half of the GAS were snap frozen in liquid nitrogen for Western blotting and stored at -80°C until use. The GAS and SOL from the right leg were removed. For each of these muscles, a slice of the entire mid-belly was mounted on a cork in optimal cutting temperature compound and frozen in liquid isopentane cooled in liquid nitrogen. Histology samples were stored at -80°C until use. The tibialis anterior (TA), extensor digitorum longus (EDL) and plantaris (PL) muscles from both legs were finally isolated and weighed to obtain a comprehensive assessment of the impact of aging and CR on muscle mass.

Transmission electron microscopy

Muscle samples were fixed in 2% glutaraldehyde solution 0.1 M cacodylate buffer (pH 7.4). These samples were later post-fixed in 1% osmium tetroxyde during 1h, dehydrated within an increasing concentration of acetone. To verify the orientation of the muscle tissue, 1 μ m thick sections were stained with toluidine blue prior to ultrathin sectioning. Ultrathin sections were cut in a longitudinal or transverse orientation on an UltracutS ultramicrotome (Leica). These sections were then stretched to remove compressions and mounted on copper grids before being stained with 2% aqueous uranyl acetate and lead citrate (Leica). Sections were then imaged using a Philips CM 100 electron microscope. Digital micrographs were captured using an AMT XR80 CCD digital camera at x7900 magnification.

Individual SS and IMF mitochondria from 4 A-AL, 4 O-AL and 4 O-CR rats were manually traced in longitudinal and transverse orientations using ImageJ software (NIH) (<https://imagej.nih.gov/ij/>) and to quantify the following morphological and shape descriptors: area (μm^2), perimeter (μm), circularity $4\pi \cdot (\text{area} / \text{perimeter}^2)$, aspect ratio ((major axis)/(minor axis)): the aspect ratio being a measure of the length to width ratio, form factor ((perimeter) / ($4\pi \cdot \text{surface}$)): a measure sensitive to the complexity and the branched appearance of the mitochondria, Feret's diameter (the longest distance (μm) between two points of the mitochondria studied) and minimum Feret diameter (corresponds to the smallest diameter of the mitochondria) (Picard et al., 2012). It is important to highlight here that n=3-4 is a sample size commonly used in TEM-based studies investigating mitochondrial morphology and ultrastructure (Bonnard et al., 2008;Sato et al., 2013;Arruda et al., 2014;Leduc-Gaudet et al., 2015;Saleem et al., 2015;Demeter-Haludka et al., 2018;Loro et al., 2018). Details on the number of SS and IMF mitochondria that were traced in both orientations in soleus and white gastrocnemius are available in Table 1.

Muscle sections for histology analysis

Eight-micron thick serial cross-sections were cut in a cryostat at -18°C and mounted on lysine coated slides (Superfrost) to determine fiber type and mitochondrial content as previously described (Gouspillou et al., 2014).

Fiber typing in muscle sections

Muscle cross-sections were immunolabeled at the same time for the different myosin heavy chains (MHC) as previously described (Leduc Gaudet et al., 2015). Briefly, sections were rehydrated with PBS (pH 7.2), blocked using goat serum (10% PBS) and incubated for 1 h at room temperature with the following primary antibody cocktail: a mouse IgG2b monoclonal anti-MHC type I (BA-F8, 1:25), mouse IgG1 monoclonal anti-MHC type IIa (SC-71, 1:200), mouse IgM monoclonal anti-MHC type IIb (BF-F3, 1:200) and a rabbit IgG polyclonal anti-laminin (Sigma

L9393, 1: 750). Muscle cross sections were then washed 3 times in PBS before being incubated for 1 h with the following secondary antibody cocktail: Alexa Fluor 350 IgG2b (y2b), goat anti-mouse antibody (Invitrogen, A-21140, 1: 500), Alexa Fluor 594 IgG1 (y1) goat anti-mouse (Invitrogen, A-21125, 1:100), Alexa Fluor 488 IgM goat anti-mouse (Invitrogen, A-21042, 1:500) and Alexa Fluor 488 IgG goat anti-rabbit (A-11008, 1:500). These sections were then washed three times in PBS and cover slipped using Prolong Gold (P36930; Invitrogen) as mounting medium. All primary antibodies targeting MHCs were purchased from the Developmental Studies Hybridoma Bank (DSHB, University of Iowa, IA). Slides were imaged using a Zeiss Axio Imager 2 fluorescence microscope (Zeiss, Oberkochen, Germany).

***In situ* determination of the succinate dehydrogenase activity**

Sections were stained for succinate dehydrogenase (SDH, complex II of the respiratory chain) activity. Muscle cross-sections were first allowed to reach room temperature. Sections were then incubated in a solution containing nitroblue tetrazolium (1.5mM), Sodium succinate (130mM), Phenazine methosulphate (0.2mM), and sodium azide (0.1mM) for 10 min at room temperature. Cross sections were then washed 3 times (3x5min) in distilled water, and cover-slipped using an aqueous mounting medium (Vector Labs, VectaMount AQ Medium, H-5501). All samples for each species were processed at the same time and using the same incubation solution, ensuring that all samples underwent the exact same experimental conditions.

Immunoblotting

The protein levels of Mfn2, Drp1 and Fis1 were determined in muscle homogenates prepared from SOL and GAS muscles. Approximately 10 mg of each muscle were homogenized in 10 volumes of an extraction buffer composed of Tris base 50mM, NaCl 150mM, Triton X-100 1%, Sodium deoxycholate 0.5%, SDS 0.1% and 10µl/ml of a protease inhibitor cocktail (Sigma P8340). The homogenate was centrifuged at 15,000g for 15min at 4°C. Protein content in the supernatant was determined using the Bradford method.

Aliquots of supernatant were mixed with Laemmli buffer and subsequently boiled at 95°C for 5 min. Thirty µg of proteins for each sample were loaded onto gradient (4-15%) and stain-free gels (Mini PROTEAN® TGX Stain-Free TM Gels, Biorad), electrophoresed by SDS-PAGE and then transferred to polyvinylidene fluoride membranes (PVDF, Biorad). A stain-free blot image was taken using the ChemiDoc™ Touch Imaging System for total protein measurement in each sample lane. Membranes were blocked in 5% non-fat milk in Tris-Buffered Saline containing 0.1% Tween

20 (TBS-T) for 1h at room temperature and then probed for 1h using the following antibodies: anti-Mfn2 (Abcam, ab50843, 1:1000), anti-DRP1 (Abcam, ab56788, 1:1000), and anti-Fis1 (Life science, ALX210-907, 1:1000). All antibodies were diluted in blocking buffer. Membranes were then washed 6 times for 5 min each in TBS-T and subsequently incubated with HRP-conjugated secondary antibodies (Abcam Ab6728 or Ab6721, 1:5000) diluted in blocking buffer 1h at room temperature. Signals were detected using enhanced chemiluminescence substrate (Biorad, Clarity ECL substrate, 170-5060) using the ChemiDoc™ Touch Imaging System. All images were analyzed using the ImageLab software (Biorad). For each sample, the ECL signal for the protein of interest was normalized to the intensity of the stain-free blot image of the corresponding sample (i.e. the intensity of the stain-free blot image was used as loading control) (Rivero-Gutierrez et al., 2014).

Statistical analyses

Differences in animal body weight, mitochondrial density by TEM, average fiber size and average values of shape descriptions used to assess mitochondrial morphology were analyzed using an Ordinary one-way ANOVA followed by post-hoc tests using the two-stage step up method of Benjamini, Krieger and Yekutieli to correct for multiple comparisons ($p < 0.05$, $q < 0.1$). Differences in muscles weight, fiber type proportion, fiber size distribution, fiber size per type and contents of proteins regulating mitochondrial dynamics were analyzed using an Ordinary two-way ANOVA followed by post-hoc tests as described above. Differences in the distribution of shape descriptor values used to assess mitochondrial morphology were tested using a Kolmogorov-Smirnov test comparing cumulative distributions. All statistical analyses were performed using the Prism 7 software (GraphPad, San Diego, CA).

RESULTS

Effect of aging and caloric restriction on body and muscles weights

O-AL male rats displayed a significantly higher body weight vs A-AL rats. As expected, O-CR rats displayed the lowest body weight of our three groups (Fig. 1A). No difference in the wet weight of the SOL and EDL was observed among the groups (Fig. 1B). The GAS, PL and TA wet weights were significantly higher in A-AL than in O-CR and O-AL rats (Fig. 1B). There was no difference in muscles weights between O-AL and O-CR (Fig. 1B). When muscles weights were normalized to body weight, an index of sarcopenia, O-AL rats displayed significantly lower TA, PL and GAS normalized weights compared to their younger counterparts (Fig. 1C). Importantly, O-CR animals displayed significantly higher TA, GAS and PL normalized weights than O-AL rats. There was no difference in muscle to body weight ratios between O-CR and A-AL rats (Fig. 1C), suggesting that CR prevented the aging-related loss of relative muscle mass.

Effect of aging and caloric restriction on skeletal muscle phenotype

We first investigated the effects of aging and CR on skeletal muscle fiber sizes. To this end, muscle cross sections were immunolabeled for type I, IIa and IIb MHCs (Fig. 2A). Both SOL and GAS muscles in O-AL and O-CR groups displayed significantly lower overall fiber size vs A-AL rats (Fig. 2B). A shift to the left of the fiber size distribution in the SOL (Fig. 2C) and GAS (Fig. 2D) of the O-AL and O-CR rats was observed vs A-AL indicating an increase in the proportion of small fibers. The SOL muscle in O-AL and O-CR rats displayed significantly smaller type I and IIa fibers compared to that in A-AL rats (Fig. 2E). Interestingly, O-CR displayed higher type IIa fiber size vs O-AL indicating that CR attenuated the effect of aging on type IIa fiber size (Fig. 2E). In the case of GAS, no difference in type I and IIa fiber sizes were observed across the tested groups (Fig. 2F). However, type IIx and IIb were significantly smaller in O-AL and O-CR vs A-AL (Fig. 2F).

The proportions of type I and type IIa fibers in the SOL were respectively higher and lower in O-AL and O-CR vs A-AL (Fig. 2G). Interestingly, the proportions of type I and IIa fibers were respectively lower and higher in the SOL of O-CR vs O-AL (Fig. 2G). O-AL group displayed significantly higher type I and IIx fiber proportion in the GAS, and lower type IIb proportion vs A-AL (Fig. 2H). Importantly, O-CR displayed significantly lower type I and IIx fiber proportion, and higher type IIb fiber proportion vs O-AL (Fig. 2H). Furthermore, no differences in fiber type proportions were observed between O-CR and A-AL (Fig. 2H).

Altogether, these data indicate that caloric restriction prevents the effects of aging on muscle fiber type composition.

Effect of aging on skeletal muscle mitochondrial content and succinate dehydrogenase activity

To assess the effect of aging and CR on skeletal muscle mitochondrial content, we quantified on longitudinal TEM images the mitochondrial density in the SOL and GAS (Fig. 3A). As expected, mitochondrial volume density was higher in the SOL vs GAS in all groups (Fig. 3B). Interestingly, no difference in mitochondrial volume density was observed between A-AL, O-AL and O-CR in both muscles (Fig. 3B). These results indicate that neither aging nor CR affected mitochondrial content. To assess the impact of aging on mitochondrial enzyme activity, we measured the activity of the Krebs cycle enzyme succinate dehydrogenase (SDH) *in situ* on muscle cross-sections (Fig. 3C-D). As shown in Fig. 3C, both O-AL and O-CR displayed lower SDH activity in the SOL vs A-AL. Similarly, O-AL displayed lower SDH activity in the GAS vs A-AL (Fig. 3D). However, the SDH activity measured in the GAS of O-CR rats was significantly higher than in O-AL but was similar to that of A-AL (Fig. 3D).

Effect of aging and caloric restriction on skeletal muscle mitochondrial morphology

To define the impact of aging and CR on mitochondrial morphology, shape descriptors were determined from TEM images acquired in both longitudinal and transversal orientations for the 2 populations of mitochondria found in skeletal muscle: subsarcolemmal (SS) and intermyofibrillar (IMF) mitochondria. To specifically assess the effects of aging on mitochondrial morphological complexity, we also plotted the aspect ratio and form factor values for all individual SS and IMF mitochondria. We then determined in A-AL and O-AL and O-CR, the proportion of mitochondria that were below the 25th percentile of adult values for both aspect ratio and form factor (morphologically simple). Similarly, we determined in A-AL, O-AL and O-CR, the proportion of mitochondria that were above the 75th percentile of adult values for both aspect ratio and form factor (morphologically complex).

Effects of aging and CR on mitochondrial morphology in the oxidative SOL muscle

When analyzed in longitudinal orientation, SOL muscles from O-AL contained SS mitochondria with significantly lower area, perimeter and minimum Feret's diameter, than their younger counterparts (Table 1 and Fig. 4A). The proportion of SS mitochondria with small aspect ratio and form factor values was also increased in O-AL vs A-AL (Fig. 4A). SOL from O-CR displayed SS mitochondria with significantly higher area, perimeter and minimum Feret's diameter

vs O-AL (Table 1 and Fig. 4A). Interestingly, no differences in the distribution of mitochondrial shape descriptors were observed between SS mitochondria from O-CR and A-AL in the SOL in longitudinal orientation (Fig. 4A).

In transversal orientation, no significant differences in area, perimeter and minimum Feret diameter were observed between SS mitochondria from O-AL and A-AL SOL (Fig. 4B). However, SS mitochondria from O-AL SOL displayed significantly higher average circularity value (Table 1), a shift to right of the circularity distribution and a shift to the left of the distribution of form factor and aspect ratio values vs A-AL (Fig. 4B). As compared to O-AL, SOL from O-CR displayed SS mitochondria with lower average circularity values, higher average form factor (Table 1), as well as a shift to the left of the circularity distribution and a shift to the right of the distribution of form factor values (Fig. 4B).

In both transversal and longitudinal orientations, O-AL displayed an increase in the proportion of morphologically simple mitochondria vs A-AL, a difference attenuated in O-CR animals (Fig. 4C and B). Taken altogether, the data indicate that aging is associated with a fragmentation of SS mitochondria in the SOL. They also indicate that CR attenuates the effects of aging on SS morphology in the SOL.

As shown in Fig. 5 and Table 1, the average values and frequency distribution of all of the shape descriptors quantified indicate that SOL IMF mitochondria from O-AL rats are fragmented compared to A-AL animals. These data also indicate that CR attenuated aging-related fragmentation of IMF mitochondria in the SOL.

Effects of aging and CR on mitochondrial morphology in the glycolytic WG muscle

In both longitudinal and transversal orientations, SS mitochondria from O-AL animals displayed significantly higher area, perimeter and minimum Feret's diameter vs A-AL (Figure 6A and B and Table 2). In addition, SS mitochondria from O-AL animals displayed significantly higher aspect ratio and form factor values, as well as a shift to the right of the circularity distribution in longitudinal orientation vs A-AL (Fig. 6A and Table 2). These data associated, with the respective increase and decrease in the proportion of complex and simple SS mitochondria in the WG of O-AL vs A-AL (Fig. 6C and D) indicate that old animals display enlarged and more complex SS mitochondria in the WG. As can be seen in Fig. 6, as well as in Table 2, CR had marginal anti-aging effects on SS mitochondrial morphology in the WG.

When we analyzed in longitudinal orientation, IMF mitochondria from O-AL rats

displayed significantly higher area, perimeter, aspect ratio, form factor and minimum Feret diameter vs A-AL (Fig. 7A and Table 2) and lower circularity values vs A-AL (Fig. 7A and Table 2). CR did not attenuate the effects of aging on these shape descriptors in longitudinal orientation; CR even exacerbated the differences between O-AL and A-AL (Fig. 7A and Table 2). In contrast to the data obtained in longitudinal orientation, IMF mitochondria from O-AL rats displayed significantly lower area, perimeter and minimum Feret diameter vs A-AL in transversal orientation (Fig. 7A and Table 2). However, IMF mitochondria from O-AL rats in transversal orientation displayed higher form factor values and complex shifts in the distribution of aspect ratio and form factor values vs A-AL (Fig. 7A and Table 2). In line with the data obtained in longitudinal orientation, data in transversal orientation indicate that CR did not prevent the effects of aging on all shape descriptors and even exacerbated some differences between O-AL and A-AL (Fig. 7B and Table 2). As shown in Fig. 7C and D, IMF mitochondria from O-AL rats displayed a higher proportion of morphologically complex mitochondria, especially in longitudinal orientation (Fig. 7C). Again, CR has marginal anti-aging effects on the morphological complexity of IMF mitochondrial in the WG (Fig. 7C and D).

Overall, these results indicate that aged WG muscles display a higher proportion of enlarged and less circular SS mitochondria and a higher proportion of more complex, elongated and branched mitochondria. They also indicate that CR exerted minor or no anti-aging effects on mitochondrial morphology in the WG.

Effects of aging and caloric restriction on immunoreactive levels of proteins regulating mitochondrial dynamics

With the aim of getting a better insight into potential mechanisms underlying the changes in mitochondrial morphology observed in O-AL and O-CR rat skeletal muscles, we next quantified the content of key proteins regulating mitochondrial dynamics.

As shown in Fig. 8A and B, the immunoreactive levels of the pro-fission protein Drp1 were significantly higher in the SOL of O-AL vs A-AL, while no difference was observed between O-AL and A-AL for the contents of Mfn2 and Fis1. Surprisingly, O-CR displayed higher Drp1 content vs A-AL (Fig. 8A and B). While no difference was observed between O-CR and A-AL for Fis1 content, the Mfn2 level was significantly higher in the SOL of O-CR vs A-AL (Fig. 8A and B).

In the GAS, O-AL displayed significantly higher Mfn2, Drp1, and Fis1 protein levels vs A-AL (Fig. 8A and C). Protein contents of Mfn2 and Fis1 were also higher in the GAS of O-AL vs O-CR (Fig. 8A and C). The WG of O-CR displayed higher contents of Drp1 vs A-AL rats (Fig. 8A

and C). No difference in Mfn2 and Fis1 contents were observed in the GAS of O-CR vs A-AL rats (Fig. 8A and C).

Taken altogether, our data indicate that aging increases mitochondrial fission in the SOL while increasing both mitochondrial fission and fusion in the GAS. They also indicate that CR partially attenuated the impact of aging on mitochondrial dynamics in the GAS and might have exerted a pro-fusion impact in the SOL.

In review

DISCUSSION

The aim of the present study was to define the impact of aging and caloric restriction on mitochondrial morphology and dynamics in oxidative and glycolytic muscles. Here, we first show that CR attenuated the impact of aging on muscle mass to body weight ratio, a sarcopenic index. We also provide evidence that CR abolished the effects of aging on muscle fiber type composition in both types of muscle. To assess the impact of aging and caloric restriction on mitochondrial morphology, we used a quantitative 2-dimensional electron microscopy approach to evaluate the morphology of the two populations of skeletal muscle mitochondria, IMF and SS, in the SOL and WG muscles. Using this approach, and in contrast with our initial hypotheses, our results indicate that aging has opposite effects on mitochondrial morphology in the SOL vs WG muscles. Indeed, we show that aging in the SOL is associated with a fragmentation of SS and IMF mitochondria. In contrast, we found that aging in the highly glycolytic WG is associated with an enlargement of SS mitochondria and an increase in the complexity and branching of IMF mitochondria. We also show that CR attenuated this aging-related fragmentation of SS and IMF mitochondria in the SOL, but had little to no impact on mitochondrial morphology in the WG. We finally show that while aging is associated with an increase in DRP1 (pro-fission) in the SOL and with increases in Mfn2 (pro-fusion), Drp1 and Fis1 (pro-fission) in the GAS, CR resulted in elevated levels of Mfn2 in the SOL and attenuated the aging-related increase in Mfn2 and Fis1 contents in the GAS.

Effect of aging and caloric restriction on skeletal muscle mass and phenotype

Although CR did not attenuate the effect of aging on skeletal muscle mass, it fully prevented the impact of aging on the muscle weight to body weight ratio, a widely used index of sarcopenia (Edstrom et al., 2006;Paturi et al., 2010;Ezzat-Zadeh et al., 2017). The preservation of this index suggests that CR attenuated the impact of aging on animal mobility and functional capacities, a speculation consistent with previous literature showing a protective impact of CR on muscle function (Hepple et al., 2005) and functional capacities (Salvatore et al., 2016). Although no effect of CR was observed in muscle fiber size, CR also totally prevented the impact of aging on muscle fiber type composition. Indeed, O-AL rats displayed a decrease in type IIa fiber proportion in the SOL and a shift towards more oxidative fibers in the GAS. In contrast, no difference in muscle fiber type composition was observed between O-CR and A-AL. The current theory explaining the progressive remodeling of muscle fiber type composition occurring in aging is based on the fact that skeletal muscle fibers undergo progressive cycles of denervation and reinnervation with age. This theory, supported by ample scientific evidence (see (Gospillou et al., 2013) for a detailed review), implicates that some fibers will lose their innervation, due to impaired neuromuscular integrity,

before being re-innervated by axonal sprouting from an adjacent motor neuron. This process is believed to progressively remodel muscle fiber type composition with age, and atrophy is thought to occur when the rate of denervation outpaces the rate of reinnervation. The absence of difference in muscle fiber type composition in O-CR vs A-AL SOL suggests that CR might protect the integrity of neuromuscular junctions (NMJ) during the aging process. This is in line with the results from Valdez et al., showing that CR significantly reduced the incidence of NMJ abnormalities in 24-month-old mice and attenuated aging-related loss of motor neurons (Valdez et al., 2010). Although muscle contractility was not assessed in the present study, one might speculate that the protective impact of CR against aging-related changes in muscle fiber type composition might have translated into a protective impact on muscle contractility. Such a speculation is in agreement with a previous report showing that CR attenuates the aging-related decline in muscle specific strength (Hepple et al., 2006).

Effect of aging and caloric restriction on mitochondrial content

The impact of aging on muscle mitochondrial content remains a controversial topic, with some studies showing reduced mitochondrial content in aged skeletal muscle (Conley et al., 2000; Chabi et al., 2008; Lanza and Nair, 2009; Crane et al., 2010) and others reporting no effect of aging (Russ and Kent-Braun, 2004; Gouspillou et al., 2014b; Leduc-Gaudet et al., 2015; St-Jean-Pelletier et al., 2017). The present study supports the view that aging is not associated with a decline in mitochondrial content, since the mitochondrial density, assessed here using the gold standard approach (i.e. assessed on TEM images), was not reduced in both the SOL and of O-AL rats. However, we found that O-AL animals display a decrease in SDH activity in both the SOL and GAS muscles, suggesting that although mitochondrial content was preserved in muscle of O-AL rats, mitochondrial bioenergetics might be impaired in old muscles. Although CR has been proposed to increase mitochondrial content (Guarente, 2008), no impact of CR on mitochondrial density could be evidenced in the present study. The absence of effect of CR on mitochondrial content in aged skeletal muscle is in line with recent studies from the Hollozy and Nair research groups, which have shown that CR does not increase mitochondrial content in rodent skeletal muscle (Hancock et al., 2011; Lanza et al., 2012). Interestingly, Lanza et al., have also shown that CR attenuates the effects of aging on state 3 (ADP-stimulated) mitochondrial respiration in the GAS (Lanza et al., 2012). This result is in line with our present finding showing that CR attenuates the effect of aging on the SDH activity in the GAS. The present results show that CR did not protect against the effects of aging on SDH activity in the SOL, suggesting that not all muscles are protected from the aging-induced decline in mitochondrial function by CR. The mechanism

underlying the differential effect of CR on SDH activity in the SOL and GAS requires further study.

Effect of aging and caloric restriction on mitochondrial morphology and dynamics

Few studies have investigated the effects of aging on mitochondrial morphology in skeletal muscle but their results were contradictory. While some studies have provided data suggesting that aging is associated with a fragmentation of IMF mitochondria (Poggi et al., 1987;Huang et al., 2010;Lanza et al., 2012;Iqbal et al., 2013), others have provided data indicating that aging is associated with an increased size of IMF mitochondria (Sebastian et al., 2016), an increased branching and morphological complexity of IMF mitochondria (Leduc-Gaudet et al., 2015), an enlargement of SS mitochondria (Leduc-Gaudet et al., 2015), and an increase in mitochondrial fusion (Leduc-Gaudet et al., 2015;Picca et al., 2017). Importantly, all studies reporting an aging-related decrease in IMF mitochondrial size only assessed mitochondrial morphology in longitudinal orientation. Sectioning skeletal muscle in the transverse orientation is however essential to accurately quantify IMF mitochondrial morphology (Ogata and Yamasaki, 1997;Picard et al., 2013b). This is because IMF mitochondria are tubular and branched structures that align along the sarcomeric plan (in transverse orientation) (Ogata and Yamasaki, 1997), which essentially appear as round structures when visualized in longitudinal orientation (Gouspillou et al., 2013). In addition, to our knowledge, no previous study has compared the impact of aging, and CR, on both oxidative and glycolytic muscles. The latter point is particularly important since mitochondrial function is well known to differ between oxidative and glycolytic muscles (Picard et al., 2012). It is therefore possible that mitochondrial morphology, and the impact of aging and CR, might also differ between oxidative and glycolytic muscles. Taking these factors into consideration, the present study is the most thorough investigation of mitochondrial morphology in the context of aging, since multiple representative shape descriptors were quantified in longitudinal and transverse orientations for both SS and IMF mitochondria and in both glycolytic and oxidative muscles. It is therefore possible that the opposite effects we report here of aging on mitochondrial morphology (i.e. fragmentation of SS and IMF mitochondria in the SOL and enlargement of SS mitochondria and an increase in the complexity and branching of IMF mitochondria in the WG) might explain some of the discrepancy currently present in the literature. In addition, our results highlight that while CR seems to protect against the effect of aging on mitochondrial morphology in the SOL, it had minor or no anti-aging effect on mitochondrial morphology in the glycolytic WG.

Our data on mitochondrial dynamics indicate that aging in the SOL is associated with an increase in the content of the pro-fission protein Drp1. A result consistent with the increase in mitochondrial fragmentation we observed in this oxidative muscle. Although CR did not attenuate the effects of aging on Drp1 content in the SOL, it was associated with an increase in the content of

pro-fusion protein Mfn2. This increase in Mfn2 content seen in the SOL of O-CR animals might be involved in the protective effects of CR against the aging-related increase in mitochondrial fragmentation in the SOL. The enlargement of SS mitochondria and the increase in the complexity and branching of IMF mitochondria seen in the WG of O-AL rats were associated with an increase in Mfn2 as well as an increase in the pro-fission protein Drp1 and Fis1. While the higher content of Mfn2 is in line with our morphological data and previous studies that have suggested an increase in mitochondrial fusion in aged muscle (Leduc-Gaudet et al., 2015; Picca et al., 2017), the concomitant increase in Drp1 and Fis1 also suggests enhanced mitochondrial fission in the WG of aged rats. This concomitant increase in the expression of both pro-fusion and pro-fission proteins might reflect an attempt to compensate for an aging-related increase in mitochondrial dysfunction by i) increasing fusion to mix the matrix content of healthy mitochondria with that of dysfunctional mitochondria in order to dampen mitochondrial dysfunction (Chen et al., 2010) and ii) increase fission to segregate the most dysfunctional mitochondria to ultimately degrade them via autophagy (Twig et al., 2008). Whether these speculations are true, or whether these changes are causally involved in the accumulation of mitochondrial dysfunction requires further mechanistic study to investigate the impact of modulating both mitochondrial fusion and fission processes on skeletal muscle aging. Interestingly, while CR did not attenuate the effect of aging on mitochondrial morphology, it did attenuate the impact of aging on the expression of some proteins regulating mitochondrial dynamics. These findings, associated with our data showing that CR attenuated the aging-related decline in SDH activity in the GAS, suggests that the CR-induced decrease in Mfn2 and Fis1 content might have played a protective role against the aging-related decrease in SDH activity.

Conclusions

The present study provides evidence that aging-related muscle atrophy is associated with differential changes in mitochondrial morphology and dynamics in oxidative vs glycolytic muscle fibers. Indeed, we show that oxidative fibers display increased mitochondrial fission/fragmentation and glycolytic fibers display increased mitochondrial size and branching. Our results also indicate that although CR partially attenuates aging-related changes in the content of proteins regulating mitochondrial dynamics in glycolytic fibers, its anti-aging effect on mitochondrial morphology is restricted to oxidative fibers. These results therefore highlight the critical need to analyze both

glycolytic and oxidative muscles to reach complete and accurate conclusions on the effects any intervention, condition, genetic manipulation or treatment on skeletal muscle mitochondria.

Acknowledgements

This work was funded by a discovery grant from the Natural Sciences and Engineering Council of Canada (NSERC) awarded to Gilles Gouspillou (#RGPIN-2014-04668). Gilles Gouspillou is the recipient of a *Chercheur Boursier Junior 1* salary award from *Fonds de recherche du Québec-Santé* (FRQS-35184). Jean-Philippe Leduc-Gaudet is supported by a Canadian Institutes of Health Research (CIHR) Vanier Fellowship. The authors are grateful to the QNRA, a network financially supported by FRQS, for providing O-AL and O-CR rats.

Author contribution:

JF and GG contributed to the conception and design of the study; JF, JPLG, OR and GG collected the data; All authors contributed to data analysis and interpretation; JF and GG wrote the first draft of the manuscript; All authors contributed to manuscript revision, read and approved the submitted version.

REFERENCES

- Arruda, A.P., Pers, B.M., Parlakgul, G., Guney, E., Inouye, K., and Hotamisligil, G.S. (2014). Chronic enrichment of hepatic endoplasmic reticulum-mitochondria contact leads to mitochondrial dysfunction in obesity. *Nat Med* 20, 1427-1435.
- Asami, D.K., McDonald, R.B., Hagopian, K., Horwitz, B.A., Warman, D., Hsiao, A., Warden, C., and Ramsey, J.J. (2008). Effect of aging, caloric restriction, and uncoupling protein 3 (UCP3) on mitochondrial proton leak in mice. *Exp Gerontol* 43, 1069-1076.
- Benard, G., Bellance, N., James, D., Parrone, P., Fernandez, H., Letellier, T., and Rossignol, R. (2007). Mitochondrial bioenergetics and structural network organization. *Journal of cell science* 120, 838-848.
- Bonnard, C., Durand, A., Peyrol, S., Chanseaux, E., Chauvin, M.A., Morio, B., Vidal, H., and Rieusset, J. (2008). Mitochondrial dysfunction results from oxidative stress in the skeletal muscle of diet-induced insulin-resistant mice. *J Clin Invest* 118, 789-800.
- Chabi, B., Ljubicic, V., Menzies, K.J., Huang, J.H., Saleem, A., and Hood, D.A. (2008). Mitochondrial function and apoptotic susceptibility in aging skeletal muscle. *Aging Cell* 7, 2-12.
- Chan, D.C. (2006). Mitochondrial fusion and fission in mammals. *Annual review of cell and developmental biology* 22, 79-99.

- Chen, H., Chomyn, A., and Chan, D.C. (2005). Disruption of fusion results in mitochondrial heterogeneity and dysfunction. *The Journal of biological chemistry* 280, 26185-26192.
- Chen, H., Vermulst, M., Wang, Y.E., Chomyn, A., Prolla, T.A., Mccaffery, J.M., and Chan, D.C. (2010). Mitochondrial fusion is required for mtDNA stability in skeletal muscle and tolerance of mtDNA mutations. *Cell* 141, 280-289.
- Conley, K.E., Jubrias, S.A., and Esselman, P.C. (2000). Oxidative capacity and ageing in human muscle. *J Physiol* 526 Pt 1, 203-210.
- Crane, J.D., Devries, M.C., Safdar, A., Hamadeh, M.J., and Tarnopolsky, M.A. (2010). The effect of aging on human skeletal muscle mitochondrial and intramyocellular lipid ultrastructure. *J Gerontol A Biol Sci Med Sci* 65, 119-128.
- Demeter-Haludka, V., Kovacs, M., Petrus, A., Patai, R., Muntean, D.M., Siklos, L., and Vegh, A. (2018). Examination of the Role of Mitochondrial Morphology and Function in the Cardioprotective Effect of Sodium Nitrite Administered 24 h Before Ischemia/Reperfusion Injury. *Front Pharmacol* 9, 286.
- Dirks, A., and Leeuwenburgh, C. (2002). Apoptosis in skeletal muscle with aging. *Am J Physiol Regul Integr Comp Physiol* 282, R519-527.
- Dirks, A.J., and Leeuwenburgh, C. (2005). The role of apoptosis in age-related skeletal muscle atrophy. *Sports Med* 35, 473-483.
- Drew, B., and Leeuwenburgh, C. (2003). Method for measuring ATP production in isolated mitochondria: ATP production in brain and liver mitochondria of Fischer-344 rats with age and caloric restriction. *Am J Physiol Regul Integr Comp Physiol* 285, R1259-1267.
- Edstrom, E., Altun, M., Hagglund, M., and Ulfhake, B. (2006). Atrogin-1/MAFbx and MuRF1 are downregulated in aging-related loss of skeletal muscle. *J Gerontol A Biol Sci Med Sci* 61, 663-674.
- Ezzat-Zadeh, Z., Kim, J.S., Chase, P.B., and Arjmandi, B.H. (2017). The Cooccurrence of Obesity, Osteoporosis, and Sarcopenia in the Ovariectomized Rat: A Study for Modeling Osteosarcopenic Obesity in Rodents. *J Aging Res* 2017, 1454103.
- Gomes, L.C., Di Benedetto, G., and Scorrano, L. (2011). During autophagy mitochondria elongate, are spared from degradation and sustain cell viability. *Nature cell biology* 13, 589-598.
- Gospillou, G., Bourdel-Marchasson, I., Rouland, R., Calmettes, G., Biran, M., Deschodt-Arsac, V., Miraux, S., Thiaudiere, E., Pasdois, P., Detaille, D., Franconi, J.M., Babot, M., Trezeguet, V., Arsac, L., and Diollez, P. (2014a). Mitochondrial energetics is impaired in vivo in aged skeletal muscle. *Aging Cell* 13, 39-48.
- Gospillou, G., Bourdel-Marchasson, I., Rouland, R., Calmettes, G., Franconi, J.M., Deschodt-Arsac, V., and Diollez, P. (2010). Alteration of mitochondrial oxidative phosphorylation in aged skeletal muscle involves modification of adenine nucleotide translocator. *Biochim Biophys Acta* 1797, 143-151.
- Gospillou, G., and Hepple, R.T. (2013). Facts and controversies in our understanding of how caloric restriction impacts the mitochondrion. *Exp Gerontol* 48, 1075-1084.
- Gospillou, G., Picard, M., Godin, R., Burelle, Y., and Hepple, R.T. (2013). Role of peroxisome proliferator-activated receptor gamma coactivator 1-alpha (PGC-1alpha) in denervation-induced atrophy in aged muscle: facts and hypotheses. *Longev Healthspan* 2, 13.
- Gospillou, G., Sgarioto, N., Kapchinsky, S., Purves-Smith, F., Norris, B., Pion, C.H., Barbat-Artigas, S., Lemieux, F., Taivassalo, T., Morais, J.A., Aubertin-Leheudre, M., and Hepple, R.T. (2014b). Increased sensitivity to mitochondrial permeability transition and myonuclear translocation of endonuclease G in atrophied muscle of physically active older humans. *FASEB J* 28, 1621-1633.
- Guarente, L. (2008). Mitochondria--a nexus for aging, calorie restriction, and sirtuins? *Cell* 132, 171-176.
- Hancock, C.R., Han, D.H., Higashida, K., Kim, S.H., and Holloszy, J.O. (2011). Does calorie restriction induce mitochondrial biogenesis? A reevaluation. *FASEB J* 25, 785-791.

- Hepple, R.T., Baker, D.J., Kaczor, J.J., and Krause, D.J. (2005). Long-term caloric restriction abrogates the age-related decline in skeletal muscle aerobic function. *FASEB J* 19, 1320-1322.
- Hepple, R.T., Baker, D.J., Mcconkey, M., Muryinka, T., and Norris, R. (2006). Caloric restriction protects mitochondrial function with aging in skeletal and cardiac muscles. *Rejuvenation Res* 9, 219-222.
- Huang, J.H., Joseph, A.M., Ljubcic, V., Iqbal, S., and Hood, D.A. (2010). Effect of age on the processing and import of matrix-destined mitochondrial proteins in skeletal muscle. *J Gerontol A Biol Sci Med Sci* 65, 138-146.
- Iqbal, S., Ostojic, O., Singh, K., Joseph, A.M., and Hood, D.A. (2013). Expression of mitochondrial fission and fusion regulatory proteins in skeletal muscle during chronic use and disuse. *Muscle Nerve* 48, 963-970.
- Jahani-Asl, A., Cheung, E.C., Neuspiel, M., Maclaurin, J.G., Fortin, A., Park, D.S., McBride, H.M., and Slack, R.S. (2007). Mitofusin 2 protects cerebellar granule neurons against injury-induced cell death. *The Journal of biological chemistry* 282, 23788-23798.
- Lanza, I.R., and Nair, K.S. (2009). Muscle mitochondrial changes with aging and exercise. *Am J Clin Nutr* 89, 467S-471S.
- Lanza, I.R., Zabielski, P., Klaus, K.A., Morse, D.M., Heppelmann, C.J., Bergen, H.R., 3rd, Dasari, S., Walrand, S., Short, K.R., Johnson, M.L., Robinson, M.M., Schimke, J.M., Jakaitis, D.R., Asmann, Y.W., Sun, Z., and Nair, K.S. (2012). Chronic caloric restriction preserves mitochondrial function in senescence without increasing mitochondrial biogenesis. *Cell Metab* 16, 777-788.
- Leduc-Gaudet, J.P., Picard, M., St-Jean Pelletier, F., Sgarioto, N., Auger, M.J., Vallee, J., Robitaille, R., St-Pierre, D.H., and Gouspillou, G. (2015). Mitochondrial morphology is altered in atrophied skeletal muscle of aged mice. *Oncotarget* 6, 17923-17937.
- Loro, E., Bisetto, S., and Khurana, T.S. (2018). Mitochondrial ultrastructural adaptations in fast muscles of mice lacking IL15RA. *J Cell Sci* 131.
- Marzetti, E., Wohlgemuth, S.E., Lees, H.A., Chung, H.Y., Giovannini, S., and Leeuwenburgh, C. (2008). Age-related activation of mitochondrial caspase-independent apoptotic signaling in rat gastrocnemius muscle. *Mech Ageing Dev* 129, 542-549.
- Ogata, T., and Yamasaki, Y. (1997). Ultra-high-resolution scanning electron microscopy of mitochondria and sarcoplasmic reticulum arrangement in human red, white, and intermediate muscle fibers. *The Anatomical record* 248, 214-223.
- Ong, S.B., Subrayan, S., Lim, S.Y., Yellon, D.M., Davidson, S.M., and Hausenloy, D.J. (2010). Inhibiting mitochondrial fission protects the heart against ischemia/reperfusion injury. *Circulation* 121, 2012-2022.
- Paturi, S., Gutta, A.K., Katta, A., Kakarla, S.K., Arvapalli, R.K., Gadde, M.K., Nalabotu, S.K., Rice, K.M., Wu, M., and Blough, E. (2010). Effects of aging and gender on muscle mass and regulation of Akt-mTOR-p70s6k related signaling in the F344BN rat model. *Mech Ageing Dev* 131, 202-209.
- Picard, M., Gentil, B.J., Mcmanus, M.J., White, K., St Louis, K., Gartside, S.E., Wallace, D.C., and Turnbull, D.M. (2013a). Acute exercise remodels mitochondrial membrane interactions in mouse skeletal muscle. *J Appl Physiol (1985)* 115, 1562-1571.
- Picard, M., Hepple, R.T., and Buelle, Y. (2012). Mitochondrial functional specialization in glycolytic and oxidative muscle fibers: tailoring the organelle for optimal function. *Am J Physiol Cell Physiol* 302, C629-641.
- Picard, M., White, K., and Turnbull, D.M. (2013b). Mitochondrial morphology, topology, and membrane interactions in skeletal muscle: a quantitative three-dimensional electron microscopy study. *J Appl Physiol (1985)* 114, 161-171.
- Picca, A., Calvani, R., Lorenzi, M., Menghi, A., Galli, M., Vitiello, R., Randisi, F., Bernabei, R., Landi, F., and Marzetti, E. (2017). Mitochondrial dynamics signaling is shifted toward

- fusion in muscles of very old hip-fractured patients: Results from the Sarcopenia in Hip Fracture (SHIFT) exploratory study. *Exp Gerontol* 96, 63-67.
- Poggi, P., Marchetti, C., and Scelsi, R. (1987). Automatic morphometric analysis of skeletal muscle fibers in the aging man. *Anat Rec* 217, 30-34.
- Rivero-Gutierrez, B., Anzola, A., Martinez-Augustin, O., and De Medina, F.S. (2014). Stain-free detection as loading control alternative to Ponceau and housekeeping protein immunodetection in Western blotting. *Anal Biochem* 467, 1-3.
- Rosenberg, I.H. (1997). Sarcopenia: origins and clinical relevance. *J Nutr* 127, 990S-991S.
- Russ, D.W., and Kent-Braun, J.A. (2004). Is skeletal muscle oxidative capacity decreased in old age? *Sports Med* 34, 221-229.
- Saleem, A., Iqbal, S., Zhang, Y., and Hood, D.A. (2015). Effect of p53 on mitochondrial morphology, import, and assembly in skeletal muscle. *Am J Physiol Cell Physiol* 308, C319-329.
- Salvatore, M.F., Terrebonne, J., Fields, V., Nodurft, D., Runfalo, C., Latimer, B., and Ingram, D.K. (2016). Initiation of calorie restriction in middle-aged male rats attenuates aging-related motoric decline and bradykinesia without increased striatal dopamine. *Neurobiol Aging* 37, 192-207.
- Sato, S., Ogura, Y., Mishra, V., Shin, J., Bhatnagar, S., Hill, B.G., and Kumar, A. (2013). TWEAK promotes exercise intolerance by decreasing skeletal muscle oxidative phosphorylation capacity. *Skelet Muscle* 3, 18.
- Sebastian, D., Soriano, E., Segales, J., Irazoki, A., Ruiz-Bonilla, V., Sala, D., Planet, E., Berenguer-Llargo, A., Munoz, J.P., Sanchez-Feutrie, M., Plana, N., Hernandez-Alvarez, M.I., Serrano, A.L., Palacin, M., and Zorzano, A. (2016). Mfn2 deficiency links age-related sarcopenia and impaired autophagy to activation of an adaptive mitophagy pathway. *EMBO J* 35, 1677-1693.
- Short, K.R., Bigelow, M.L., Kahl, J., Singh, R., Coenen-Schimke, J., Raghavakaimal, S., and Nair, K.S. (2005). Decline in skeletal muscle mitochondrial function with aging in humans. *Proc Natl Acad Sci U S A* 102, 5618-5623.
- St-Jean-Pelletier, F., Pion, C.H., Leduc-Gaudet, J.P., Sgarbiato, N., Zovile, I., Barbat-Artigas, S., Reynaud, O., Alkaterji, F., Lemieux, F.C., Grenon, A., Gaudreau, P., Hepple, R.T., Chevalier, S., Belanger, M., Morais, J.A., Aubertin-Leheudre, M., and Gouspillou, G. (2017). The impact of ageing, physical activity, and pre-frailty on skeletal muscle phenotype, mitochondrial content, and intramyocellular lipids in men. *J Cachexia Sarcopenia Muscle* 8, 213-228.
- Twig, G., Elorza, A., Molina, A.J., Mohamed, H., Wikstrom, J.D., Walzer, G., Stiles, L., Haigh, S.E., Katz, S., Las, G., Alroy, J., Wu, M., Py, B.F., Yuan, J., Deeney, J.T., Corkey, B.E., and Shirihai, O.S. (2008). Fission and selective fusion govern mitochondrial segregation and elimination by autophagy. *EMBO J* 27, 433-446.
- Umanskaya, A., Santulli, G., Xie, W., Andersson, D.C., Reiken, S.R., and Marks, A.R. (2014). Genetically enhancing mitochondrial antioxidant activity improves muscle function in aging. *Proc Natl Acad Sci U S A* 111, 15250-15255.
- Valdez, G., Tapia, J.C., Kang, H., Clemenson, G.D., Jr., Gage, F.H., Lichtman, J.W., and Sanes, J.R. (2010). Attenuation of age-related changes in mouse neuromuscular synapses by caloric restriction and exercise. *Proc Natl Acad Sci U S A* 107, 14863-14868.
- Wohlgemuth, S.E., Seo, A.Y., Marzetti, E., Lees, H.A., and Leeuwenburgh, C. (2010). Skeletal muscle autophagy and apoptosis during aging: effects of calorie restriction and life-long exercise. *Exp Gerontol* 45, 138-148.
- Yu, T., Sheu, S.S., Robotham, J.L., and Yoon, Y. (2008). Mitochondrial fission mediates high glucose-induced cell death through elevated production of reactive oxygen species. *Cardiovascular research* 79, 341-351.

Table 1: Effects of aging and caloric restriction on morphological parameters and shape descriptors of subsarcolemmal and intermyofibrillar mitochondria in the soleus

		SOLEUS					
		Longitudinal Orientation			Transverse Orientation		
		A-AL	O-AL	O-RC	A-AL	O-AL	O-RC
	SS						
N		1612	4746	1359	1993	1880	1143
Area (um ²)		0.25 ± 0.006 ^{ab}	0.19 ± 0.002 ^{ac}	0.23 ± 0.006 ^{bc}	0.22 ± 0.004	0.22 ± 0.005	0.24 ± 0.007
Perimeter (µm)		1.81 ± 0.022 ^a	1.64 ± 0.011 ^{ac}	1.76 ± 0.023 ^c	1.73 ± 0.017	1.72 ± 0.018	1.82 ± 0.026
Circularity		0.84 ± 0.003	0.84 ± 0.002	0.84 ± 0.004	0.84 ± 0.003 ^a	0.85 ± 0.003 ^{ac}	0.83 ± 0.005 ^c
Aspect Ratio		1.71 ± 0.017	1.69 ± 0.010	1.70 ± 0.018	1.75 ± 0.017	1.68 ± 0.017	1.76 ± 0.025
Form Factor		1.24 ± 0.007	1.25 ± 0.005	1.25 ± 0.008	1.25 ± 0.007	1.22 ± 0.008 ^c	1.27 ± 0.011 ^c
Minimum Feret (µm)		0.42 ± 0.005 ^a	0.38 ± 0.002 ^{ac}	0.41 ± 0.005 ^c	0.40 ± 0.004	0.41 ± 0.004	0.42 ± 0.005
	IMF						
N		3955	8487	6101	3189	7138	3962
Area (um ²)		0.10 ± 0.002 ^a	0.11 ± 0.001 ^{ac}	0.1 ± 0.001 ^c	0.14 ± 0.002 ^{ab}	0.09 ± 0.001 ^{ac}	0.15 ± 0.002 ^{bc}
Perimeter (µm)		1.21 ± 0.009 ^a	1.26 ± 0.008 ^{ac}	1.18 ± 0.008 ^c	1.78 ± 0.021 ^{ab}	1.24 ± 0.009 ^{ac}	1.67 ± 0.019 ^{bc}
Circularity		0.81 ± 0.002 ^b	0.81 ± 0.002 ^c	0.83 ± 0.002 ^{bc}	0.64 ± 0.005 ^{ab}	0.77 ± 0.002 ^{ac}	0.72 ± 0.004 ^{bc}
Aspect Ratio		1.84 ± 0.013 ^{ab}	1.89 ± 0.011 ^{ac}	1.76 ± 0.010 ^{bc}	3.02 ± 0.035 ^{ab}	2.17 ± 0.016 ^{ac}	2.50 ± 0.028 ^{bc}
Form Factor		1.28 ± 0.005 ^{ab}	1.31 ± 0.004 ^{ac}	1.26 ± 0.004 ^{bc}	1.99 ± 0.021 ^{ab}	1.45 ± 0.008 ^{ac}	1.68 ± 0.017 ^{bc}
Minimum Feret (µm)		0.26 ± 0.002	0.27 ± 0.001	0.26 ± 0.001	0.28 ± 0.002 ^{ab}	0.25 ± 0.001 ^{ac}	0.30 ± 0.002 ^{bc}

Data were obtained from adult ad libitum-fed (A-AL, N=4), old ad libitum-fed (O-AL, N=4) and old CR rats (O-RC, N=4). a: p<0,05 A-AL vs O-AL; b: p<0,05 A-AL vs O-RC; c: p<0,05 O-AL vs O-RC. Data are presented as mean ± SEM.

Table 2: Effects of aging and caloric restriction on morphological parameters and shape descriptors of subsarcolemmal and intermyofibrillar mitochondria in the white gastrocnemius.

		WHITE GASTROCNEMIUS					
		Longitudinal Orientation			Transverse Orientation		
		A-AL	O-AL	O-RC	A-AL	O-AL	O-RC
	SS						
N		610	1010	559	502	390	117
Area (um ²)		0.08 ± 0.003 ^{ab}	0.14 ± 0.005 ^{ac}	0.16 ± 0.006 ^{bc}	0.10 ± 0.003 ^{ab}	0.13 ± 0.005 ^a	0.13 ± 0.010 ^b
Perimeter (μm)		1.12 ± 0.019 ^{ab}	1.43 ± 0.026 ^{ac}	1.59 ± 0.037 ^{bc}	1.25 ± 0.026 ^a	1.39 ± 0.034 ^a	1.34 ± 0.054
Circularity		0.84 ± 0.005 ^{ab}	0.77 ± 0.006 ^a	0.78 ± 0.007 ^b	0.83 ± 0.007	0.83 ± 0.009	0.84 ± 0.015
Aspect Ratio		1.69 ± 0.027 ^{ab}	2.02 ± 0.034 ^{ac}	1.89 ± 0.038 ^{bc}	1.82 ± 0.047	1.88 ± 0.070	1.73 ± 0.090
Form Factor		1.23 ± 0.011 ^{ab}	1.39 ± 0.015 ^a	1.37 ± 0.020 ^b	1.28 ± 0.019	1.31 ± 0.028	1.28 ± 0.048
Minimum Feret (μm)		0.26 ± 0.003 ^{ab}	0.29 ± 0.004 ^{ac}	0.33 ± 0.005 ^{bc}	0.27 ± 0.003 ^{ab}	0.31 ± 0.006 ^a	0.32 ± 0.007 ^b
	IMF						
N		2326	3724	1566	972	1352	2119
Area (um ²)		0.07 ± 0.001 ^{ab}	0.10 ± 0.002 ^{ac}	0.12 ± 0.003 ^{bc}	0.14 ± 0.004 ^{ab}	0.11 ± 0.003 ^{ac}	0.10 ± 0.002 ^{bc}
Perimeter (μm)		1.00 ± 0.010 ^{ab}	1.21 ± 0.011 ^{ac}	1.30 ± 0.020 ^{bc}	1.73 ± 0.035 ^{ab}	1.48 ± 0.027 ^{ac}	1.31 ± 0.019 ^{bc}
Circularity		0.86 ± 0.003 ^{ab}	0.79 ± 0.003 ^{ac}	0.82 ± 0.004 ^{bc}	0.68 ± 0.008	0.69 ± 0.007	0.70 ± 0.005
Aspect Ratio		1.63 ± 0.017 ^{ab}	1.97 ± 0.017 ^{ac}	1.81 ± 0.026 ^{bc}	2.68 ± 0.054 ^a	2.96 ± 0.07 ^a	2.83 ± 0.049
Form Factor		1.21 ± 0.006 ^{ab}	1.36 ± 0.007 ^{ac}	1.31 ± 0.011 ^{bc}	1.78 ± 0.029	1.86 ± 0.035	1.81 ± 0.025
Minimum Feret (μm)		0.23 ± 0.001 ^{ab}	0.25 ± 0.001 ^{ac}	0.28 ± 0.003 ^{bc}	0.30 ± 0.005 ^{ab}	0.27 ± 0.004 ^{ac}	0.24 ± 0.003 ^{bc}

Data are presented as mean ± SEM. Data were obtained from adult ad libitum-fed (A-AL, N=4), old ad-libitum fed (O-AL, N=4) and old CR rats (O-CR, N=4). a: p<0,05 A-AL vs O-AL; b: p<0,05 A-AL vs O-CR; c: p<0,05 O-AL vs O-CR.

Figure legends

Figure 1: Effect of aging and caloric restriction on body weight and muscles weight. **A.** Whole body weights and **B.** TA, SOL, GAS, EDL, PL muscles weights. **C.** and TA, SOL, GAS, EDL and PL weight relative to body weight of adults (A-AL, N=9), old ad libitum (O-AL, N=4) and old CR rats (O-CR, N=11). Data represented mean \pm SEM. *: $p < 0.05$.

Figure 2: Effect of aging and caloric restriction on fiber cross-sectional area and fibers type.

A. Representative immunolabeling of type I (blue), type IIa (red) and type IIb (green) myosin heavy chains (MHCs) performed on muscle cross section of SOL (left) and GAS (right) muscles from A-AL. **B.** Average fiber size of the SOL and WG of A-AL, O-AL, O-CR rats. **C.** and **D.** Fiber size distribution in the SOL (**C.**) and GAS (**D.**) of A-AL, O-AL and O-CR rats. **E.** and **F.** Muscle fiber type composition in SOL (**E.**) and GAS (**F.**) of A-AL, O-AL and O-CR rats. Muscle fiber type proportion in SOL (**G.**) and GAS (**H.**) of A-AL, O-AL and O-CR rats. Scale bars: 1000 μ m. Data in graphs are presented as Mean \pm SEM. $N = 4$ to 9 per group. *: $p < 0.05$. Data in graphs C and D *: $p < 0.05$ A-AL vs O-AL, ■: $p < 0.05$ A-AL vs O-CR, •: $p < 0.05$ O-AL vs O-CR.

Figure 3: Effect of aging on skeletal muscle mitochondrial content. **A.** Representative longitudinal TEM images of A-AL, O-AL and O-CR that were used for the quantification of mitochondrial volume density. The results of these quantifications for the SOL and WG are presented in **B** ($n = 4$ in each group). **C.** and **D.** Representative succinate dehydrogenase (SDH) stain and quantification of SOL (**C.**) and GAS (**D.**) cross-sections of A-AL, O-AL and O-CR (A-AL, $N=7-8$; O-AL, $N=4$ and O-CR, $N=7-8$). Data in graphs are presented as Mean \pm SEM. Scale bars in **A.**: 2 μ m. Scale bars in **C.** and **D.**: 1000 μ m.

Figure 4: Effect of aging and caloric restriction on the morphology of subsarcolemmal (SS) mitochondria in the oxidative SOL muscle. Analyses of morphological parameters of mitochondria SS in soleus muscle (longitudinal and transversal orientation). **A.** and **B.** Frequency distribution of shape descriptors and morphological for SS mitochondria in longitudinal (A) and transversal orientations (B). **C.** and **D.** display the form factor and aspect ratio relationship for individual SS mitochondria for A-AL (left graph), O-AL (middle graph) and O-CR (right graph) rats in longitudinal (C) and transversal orientations (D). In **C.** and **D.**, blue and red dashed lines represent the 25th and 75th percentiles for either aspect ratio or form factor values of A-AL, respectively. The pie charts in the second line represent the percentage of mitochondria with simple (i.e. mitochondria with aspect ratio and form factors values inferior to the 25th percentile of A-AL

values), complex (i.e. mitochondria with aspect ratio and form factors values above the 75th percentile of A-AL values) and intermediate (i.e. neither simple nor complex). Differences in frequency distributions were tested using a Kolmogorov-Smirnov test comparing cumulative distributions.

Figure 5: Effect of aging and caloric restriction on the morphology of intermyofibrillar (IMF) mitochondria in the oxidative SOL muscle. Analyses of morphological parameters of mitochondria IMF in the SOL muscle (longitudinal and transversal orientation). **A.** and **B.** Frequency distribution of shape descriptors and morphological for IMF mitochondria in longitudinal (A) and transversal orientations (B). **C.** and **D.** display the form factor and aspect ratio relationship for individual IMF mitochondria for A-AL (left graph), O-AL (middle graph) and O-CR (right graph) rats in longitudinal (C) and transversal orientations (D). In **C.** and **D.**, blue and red dashed lines represent the 25th and 75th percentiles for either aspect ratio or form factor values of A-AL, respectively. The pie charts in the second line represent the percentage of mitochondria with simple (i.e. mitochondria with aspect ratio and form factors values inferior to the 25th percentile of A-AL values), complex (i.e. mitochondria with aspect ratio and form factors values above the 75th percentile of A-AL values) and intermediate (i.e. neither simple nor complex). Differences in frequency distributions were tested using a Kolmogorov-Smirnov test comparing cumulative distributions.

Figure 6: Effect of aging and caloric restriction on the morphology of subsarcolemmal (SS) mitochondria in the glycolytic white gastrocnemius (WG) muscle. Analyses of morphological parameters of mitochondria SS in WG muscle (longitudinal and transversal orientation). **A.** and **B.** Frequency distribution of shape descriptors and morphological for SS mitochondria in longitudinal (A) and transversal orientations (B). **C.** and **D.** display the form factor and aspect ratio relationship for individual SS mitochondria for A-AL (left graph), O-AL (middle graph) and O-CR (right graph) rats in longitudinal (C) and transversal orientations (D). In **C.** and **D.**, blue and red dashed lines represent the 25th and 75th percentiles for either aspect ratio or form factor values of A-AL, respectively. The pie charts in the second line represent the percentage of mitochondria with simple (i.e. mitochondria with aspect ratio and form factors values inferior to the 25th percentile of A-AL values), complex (i.e. mitochondria with aspect ratio and form factors values above the 75th percentile of A-AL values) and intermediate (i.e. neither simple nor complex). Differences in frequency distributions were tested using a Kolmogorov-Smirnov test comparing cumulative distributions.

Figure 7: Effect of aging and caloric restriction on the morphology of intermyofibrillar (IMF)

mitochondria in the glycolytic white gastrocnemius (WG) muscle. Analyses of morphological parameters of mitochondria IMF in WG muscle (longitudinal and transversal orientations). **A.** and **B.** Frequency distribution of shape descriptors and morphological for IMF mitochondria in longitudinal (A) and transversal orientations (B). **C.** and **D.** display the form factor and aspect ratio relationship for individual IMF mitochondria for A-AL (left graph), O-AL (middle graph) and O-CR (right graph) rats in longitudinal (C) and transversal orientations (D). In **C.** and **D.**, blue and red dashed lines represent the 25th and 75th percentiles for either aspect ratio or form factor values of A-AL, respectively. The pie charts in the second line represent the percentage of mitochondria with simple (i.e. mitochondria with aspect ratio and form factors values inferior to the 25th percentile of A-AL values), complex (i.e. mitochondria with aspect ratio and form factors values above the 75th percentile of A-AL values) and intermediate (i.e. neither simple nor complex). Differences in frequency distributions were tested using a Kolmogorov-Smirnov test comparing cumulative distributions.

Figure 8: Effect of skeletal muscle aging and caloric restriction on immunoreactive levels of proteins regulating mitochondrial dynamics in oxidative and glycolytic muscles. **A.** Representative immunoblots of Mfn2, Drp1, Fis1 as well as their corresponding stain free images. **B-C.** Quantification of Mfn2, Drp1, Fis1 proteins contents (normalized to their corresponding to their stain free intensity) in the SOL (B) and GAS (C) of adult (A-AL), old ad libitum-fed (O-AL) and old CR (O-CR) rats. Data in graphs are presented as Mean \pm SEM. ($n = 7-8$ A-AL, $n=4$ O-AL, $n=8-10$ O-CR per group. $*= p < 0.05$).

Figure 1

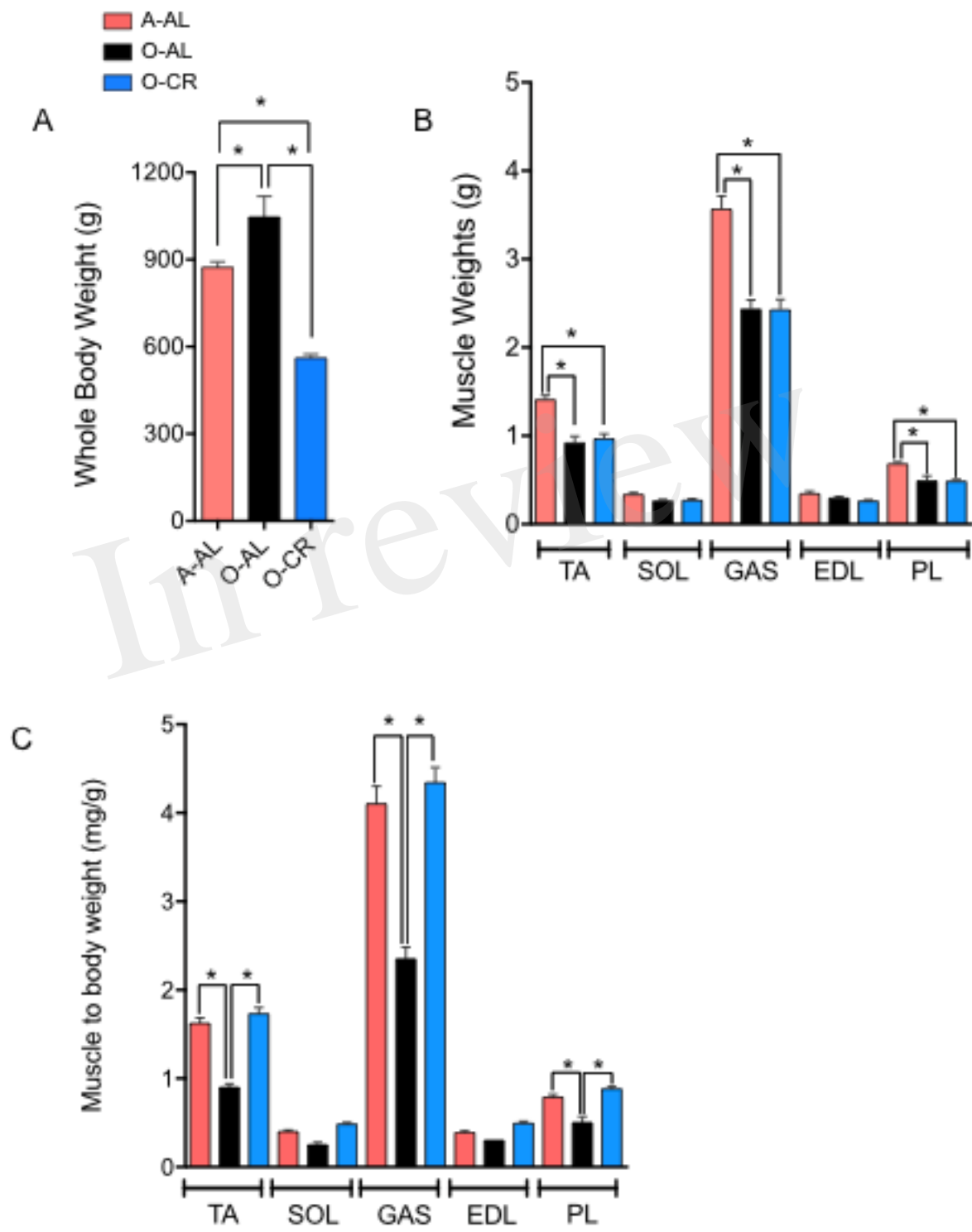


Figure 2

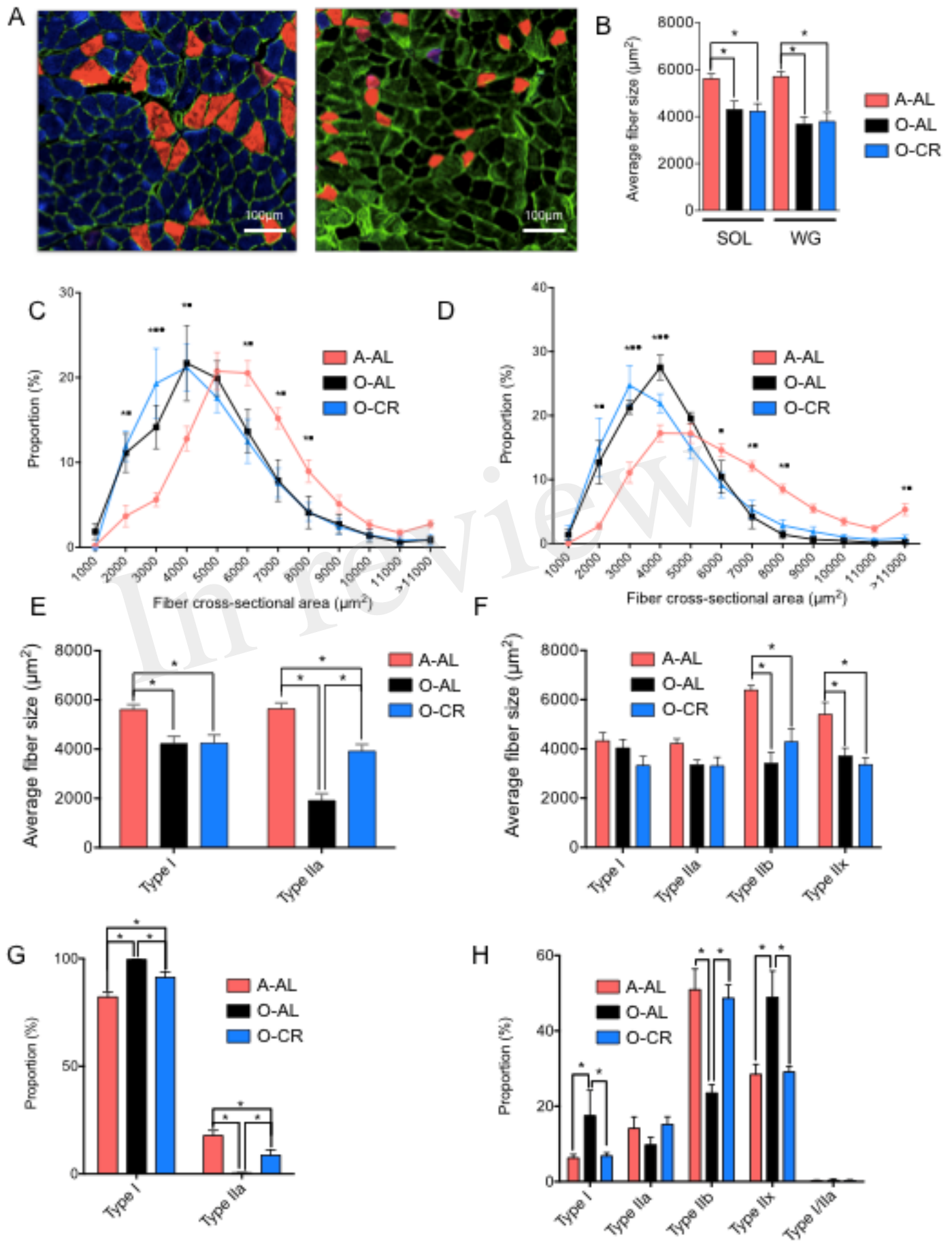


Figure 3

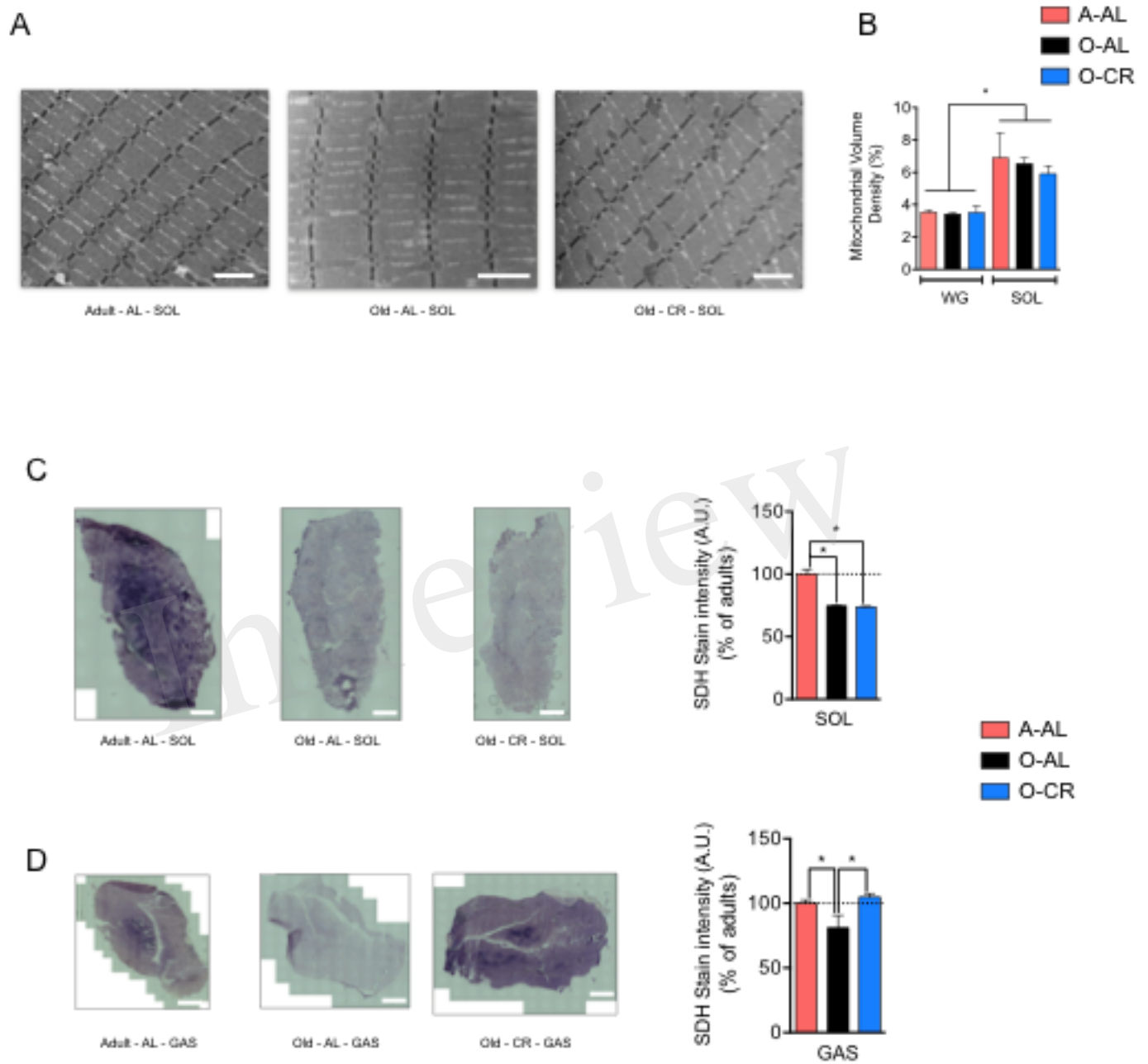


Figure 4

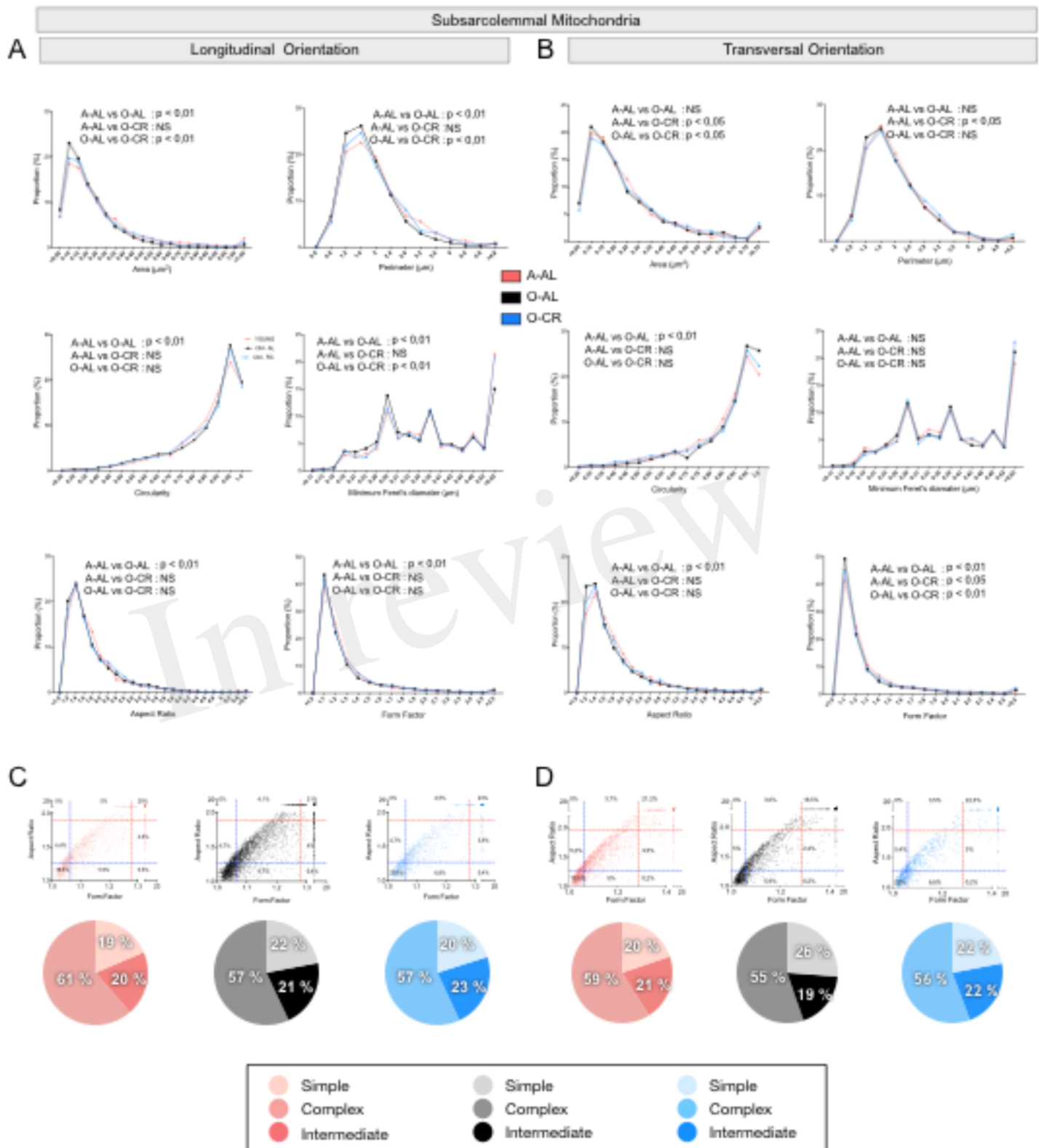


Figure 5

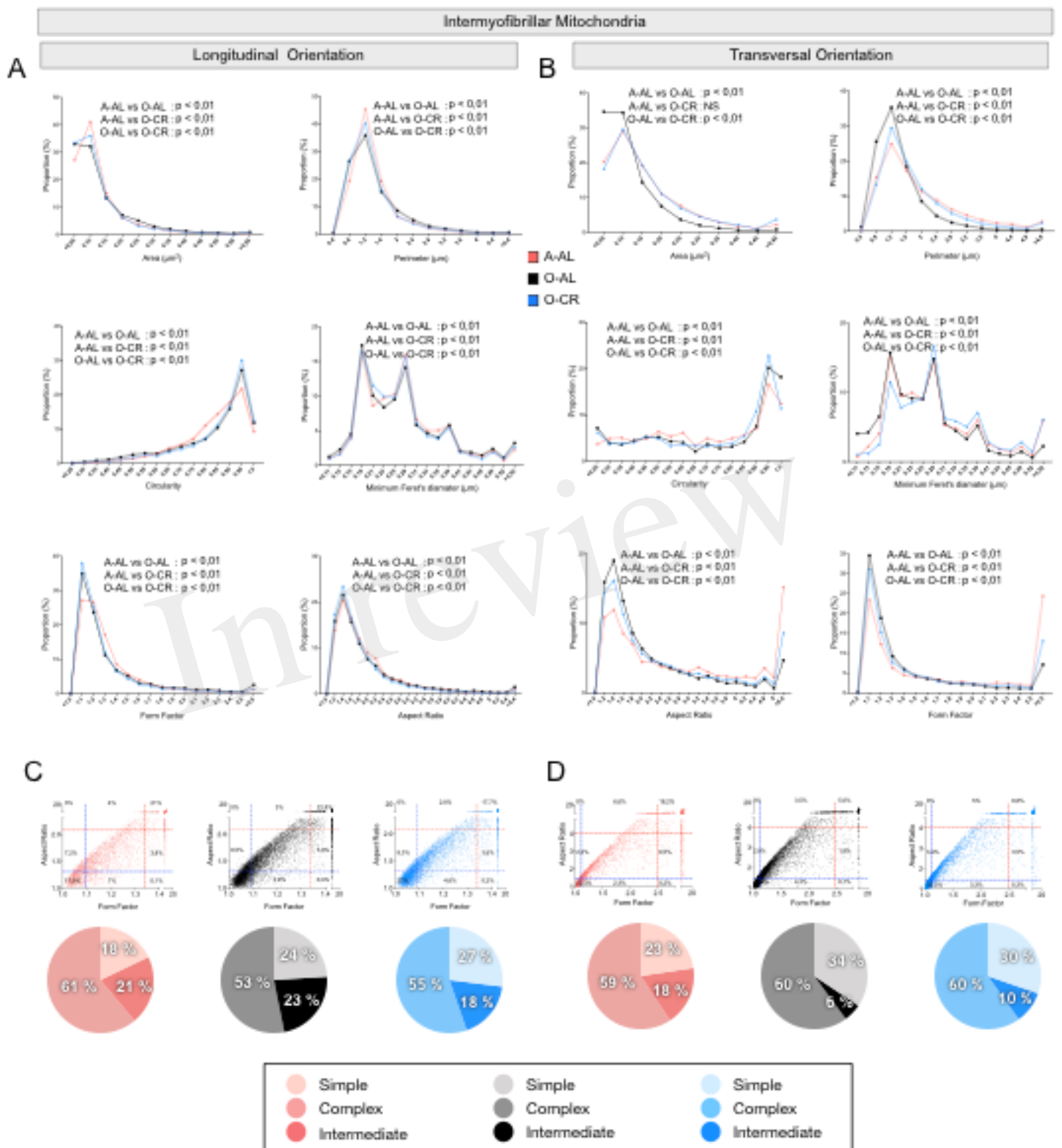


Figure 6

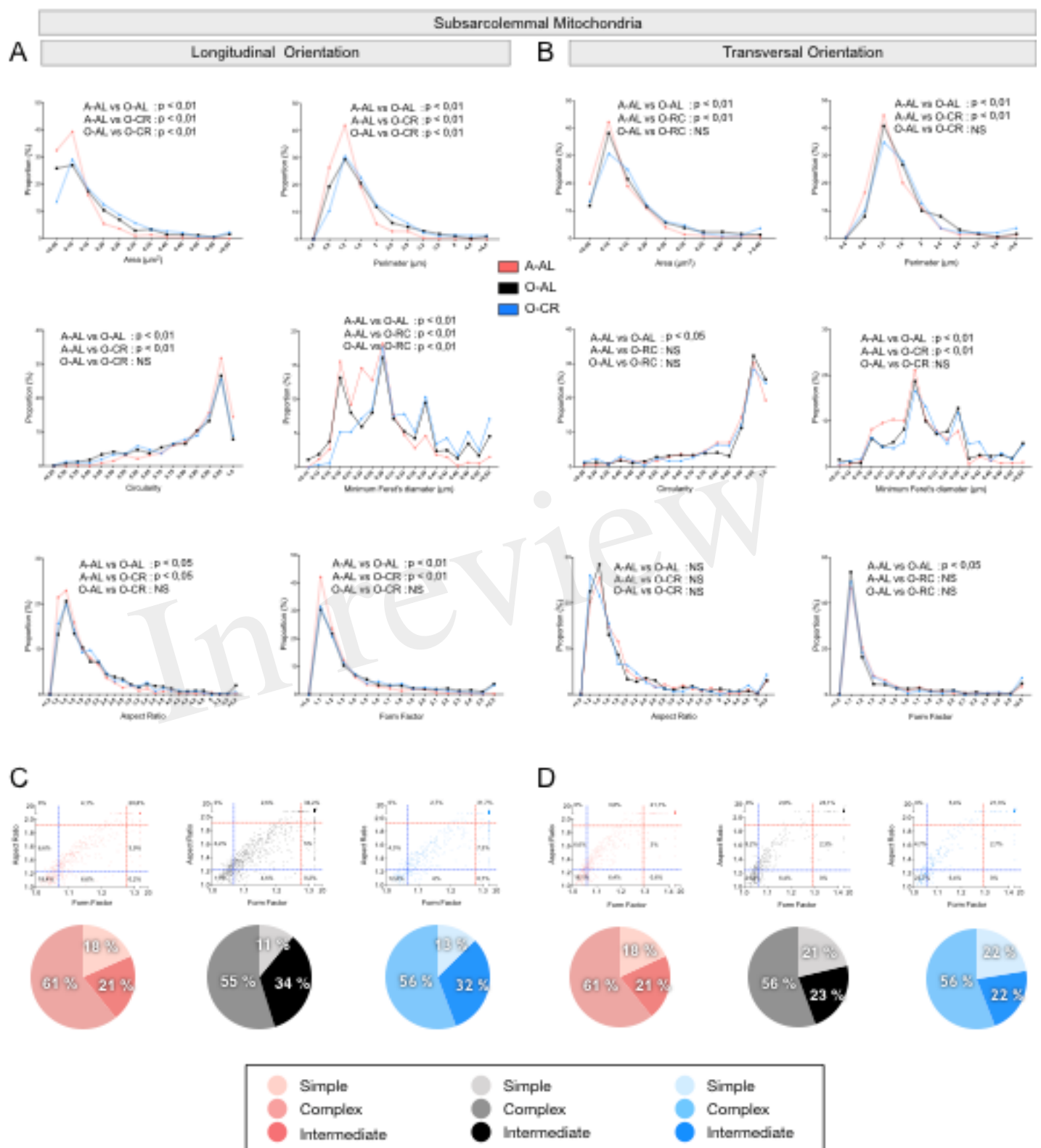


Figure 7

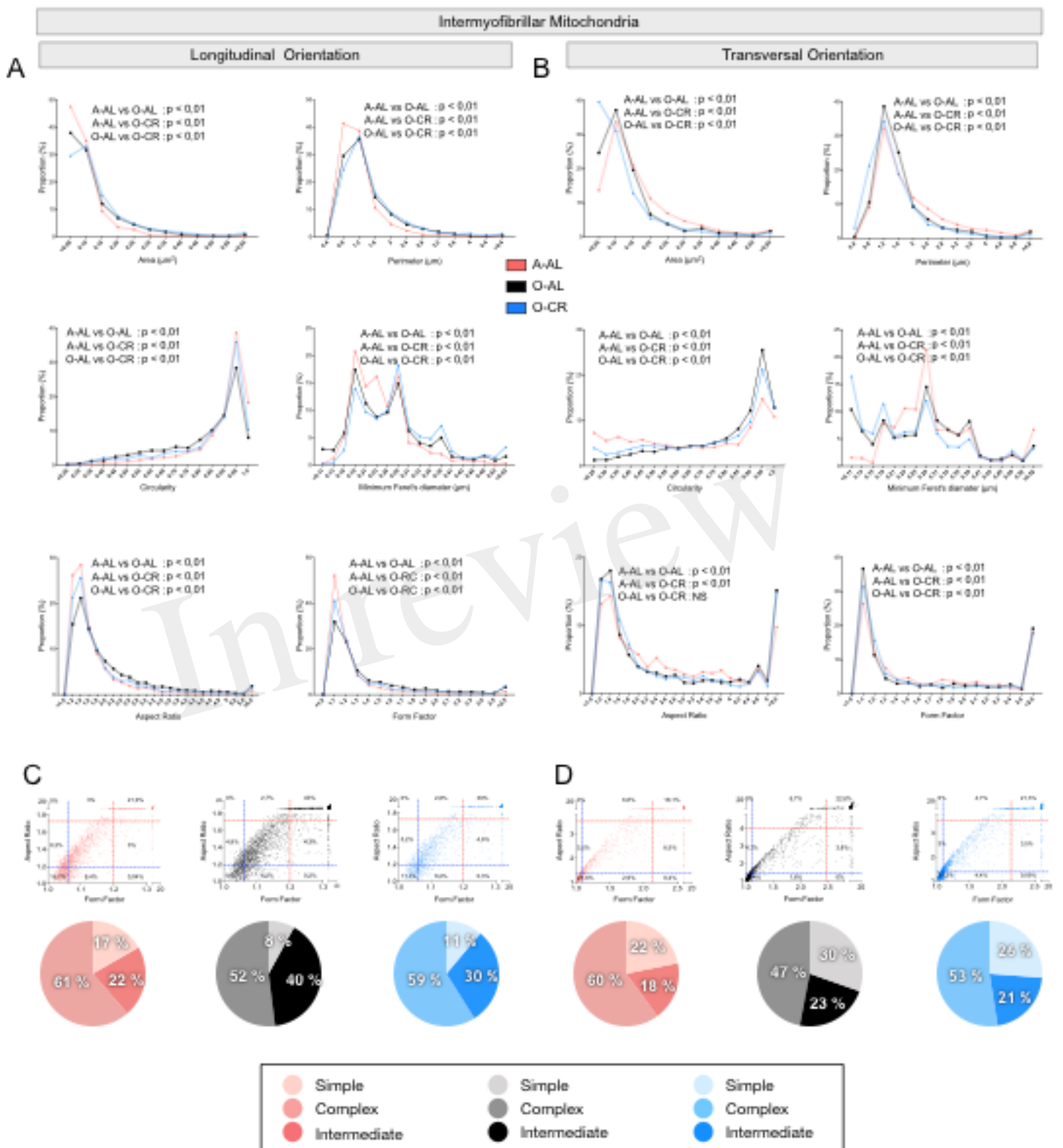


Figure 8

